



Gerber Architekten



Osnabrück Hospital – Centre for Neuromedicine and Geriatrics (ZNG)

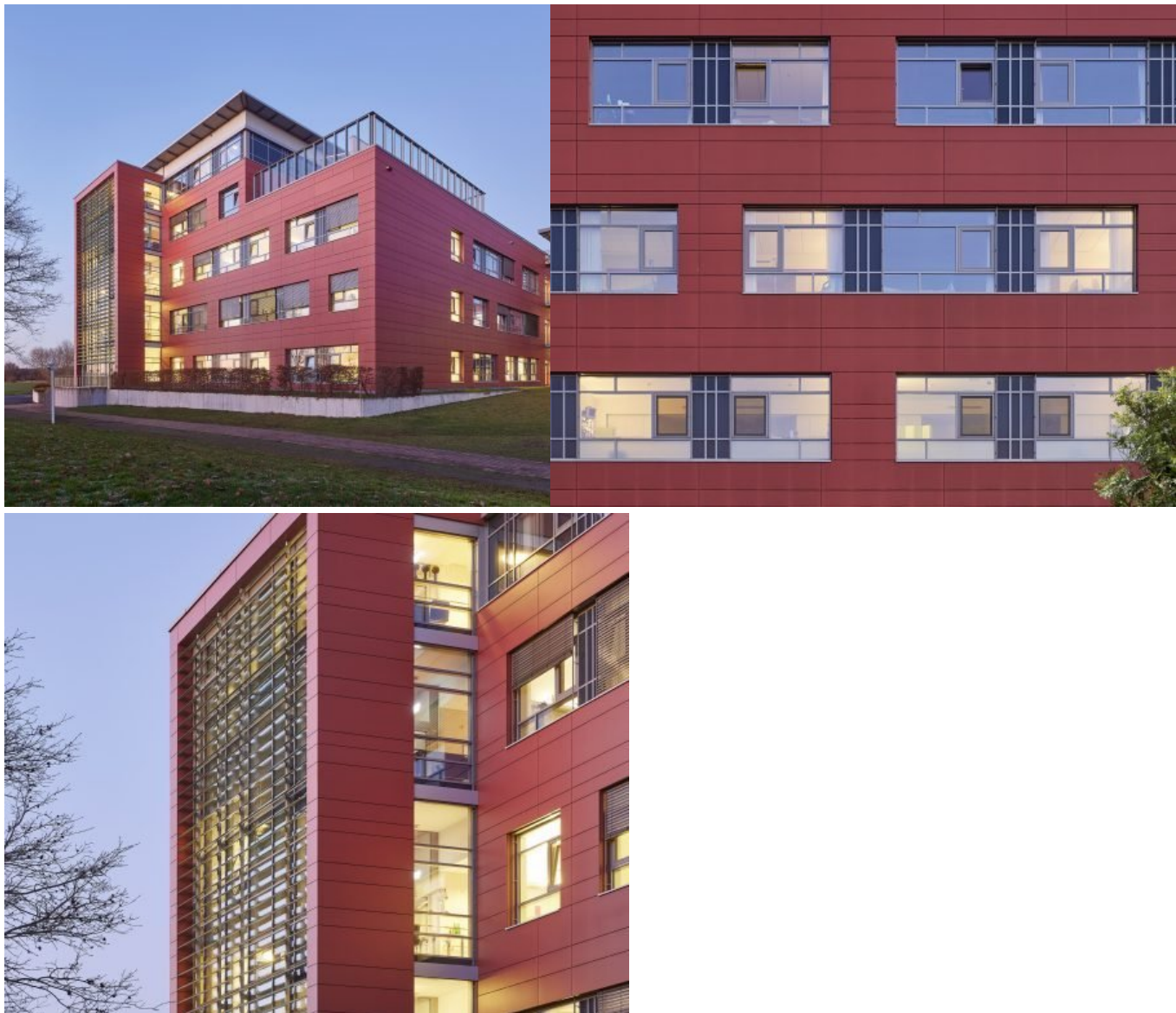
The Neuromedical Centre is located in the north-western section of Osnabrück Hospital. In line with its interdisciplinary orientation, it brings together all disciplines involved in the acute and early rehabilitation care of neuromedically ill patients: acute neurology and early neurological rehabilitation (phase B+C) as well as acute geriatrics and geriatric rehabilitation. This concept is complemented by a separate area for patients with severe cognitive impairment. There is also a palliative care ward on level 5.

In this model project of the state of Lower Saxony, the doctors' and treatment rooms are located on the bed levels. Therapies are largely carried out at the patient's bedside or on the floor of the patient's room. The shortened treatment paths mean that transfers between wards can be minimised, interfaces optimised and patients relieved.

The new building consists of two 3-storey building cubes arranged as an extension of the central main corridor, which are linked by a 5-storey centre section. Through the interplay of transparent glass and metal surfaces with bright red accentuated façade surfaces, the Neuromedical Centre forms the keystone of the hospital site, visible from afar. The cubes feature spacious roof gardens with open spaces for physiotherapy and sensory training. There are also open spaces for exercise and recreation, including for cognitively impaired patients. A variable colour concept with bright colours next to

exposed concrete walls characterises the individual wards and their interior design. The dynamic façade structure and the striking staircases show how the internal structure is also interlinked on the outside.

<https://www.gerberarchitekten.de/en/project/conversion-extension-maternityward-marienhospital-gelsenkirchen-3/>





Gerber Architekten

Dortmund
Hamburg
Berlin
Riad
Shanghai

www.gerberarchitekten.de

Bildnachweis · Picture Credits

Für individuelle Foto-/Bild-Nachweise wenden Sie sich bitte an:
For individual photo credits please contact:

Gerber Architekten
Tönnishof 9-13
44149 Dortmund
Germany
Fon: +49 231 9065 - 0
Fax: +49 231 9065 - 111
E-Mail: kontakt@gerberarchitekten.de