



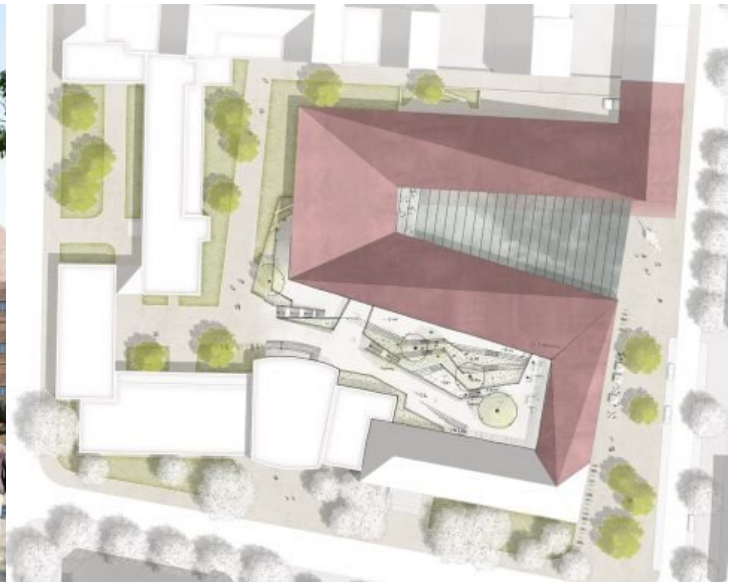
Gerber Architekten



## Faculty building of Earth- and Environmental Sciences LMU Munich

The new building for the department of Earth- and Environmental Sciences LMU Munich is a v-shaped sculptural structure which connects to the existing buildings in the northern part of the property as well as to the institute building in the south. The interior of the V-shape is designed as a glass hall, which at the same time emphasizes the entrance situation and offers a 'showcase' into the new building of geological and environmental science. The forecourt at the entrance continues into the hall, which serves as a public exhibition area for large scale exhibits or events. The Institute can present itself in this spacious airspace with all its working areas, as both the first basement with the workshop spaces, the library landscape on the ground floor and the generously glazed laboratory areas on the upper floors are oriented towards the hall. The boundary between outside and inside is removed – research can be experienced directly.

<https://www.gerberarchitekten.de/en/project/faculty-building-of-earth-and-environmental-sciences/>





Gerber Architekten

Dortmund  
Hamburg  
Berlin  
Riad  
Shanghai

[www.gerberarchitekten.de](http://www.gerberarchitekten.de)

**Bildnachweis · Picture Credits**

Für individuelle Foto-/Bild-Nachweise wenden Sie sich bitte an:  
*For individual photo credits please contact:*

Gerber Architekten  
Tönnishof 9-13  
44149 Dortmund  
Germany  
Fon: +49 231 9065 - 0  
Fax: +49 231 9065 - 111  
E-Mail: [kontakt@gerberarchitekten.de](mailto:kontakt@gerberarchitekten.de)