



Gerber Architekten

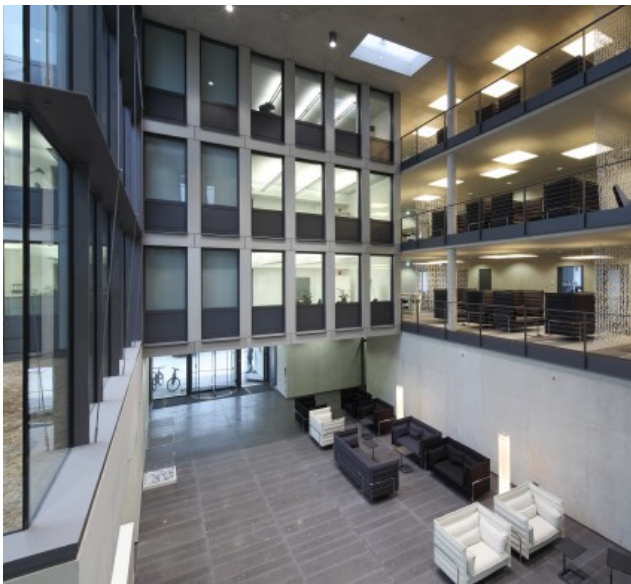


## Head Office for Able Group

The new building for the company's headquarters is designed as a simple three-storey cuboid, which surrounds a garden patio as well as a building-high, glass-roofed entrance hall. The façades are of a very reduced design, consisting primarily of a column-beam-structure and room-high windows. Despite that the patios inside surprise the visitor with great openness and transparency.

Due to the contaminated ground the store and plant rooms are located aboveground. On top of these rooms the garden patio forms a green centre and allows for an optimal illumination of the office floors, which can be used flexibly.

<https://www.gerberarchitekten.de/en/project/head-office-for-able-group/>





Gerber Architekten

Dortmund  
Hamburg  
Berlin  
Riad  
Shanghai

[www.gerberarchitekten.de](http://www.gerberarchitekten.de)

**Bildnachweis - Picture Credits**

Für individuelle Foto-/Bild-Nachweise wenden Sie sich bitte an:  
*For individual photo credits please contact:*

Gerber Architekten  
Tönnishof 9-13  
44149 Dortmund  
Germany  
Fon: +49 231 9065 - 0  
Fax: +49 231 9065 - 111  
E-Mail: [kontakt@gerberarchitekten.de](mailto:kontakt@gerberarchitekten.de)