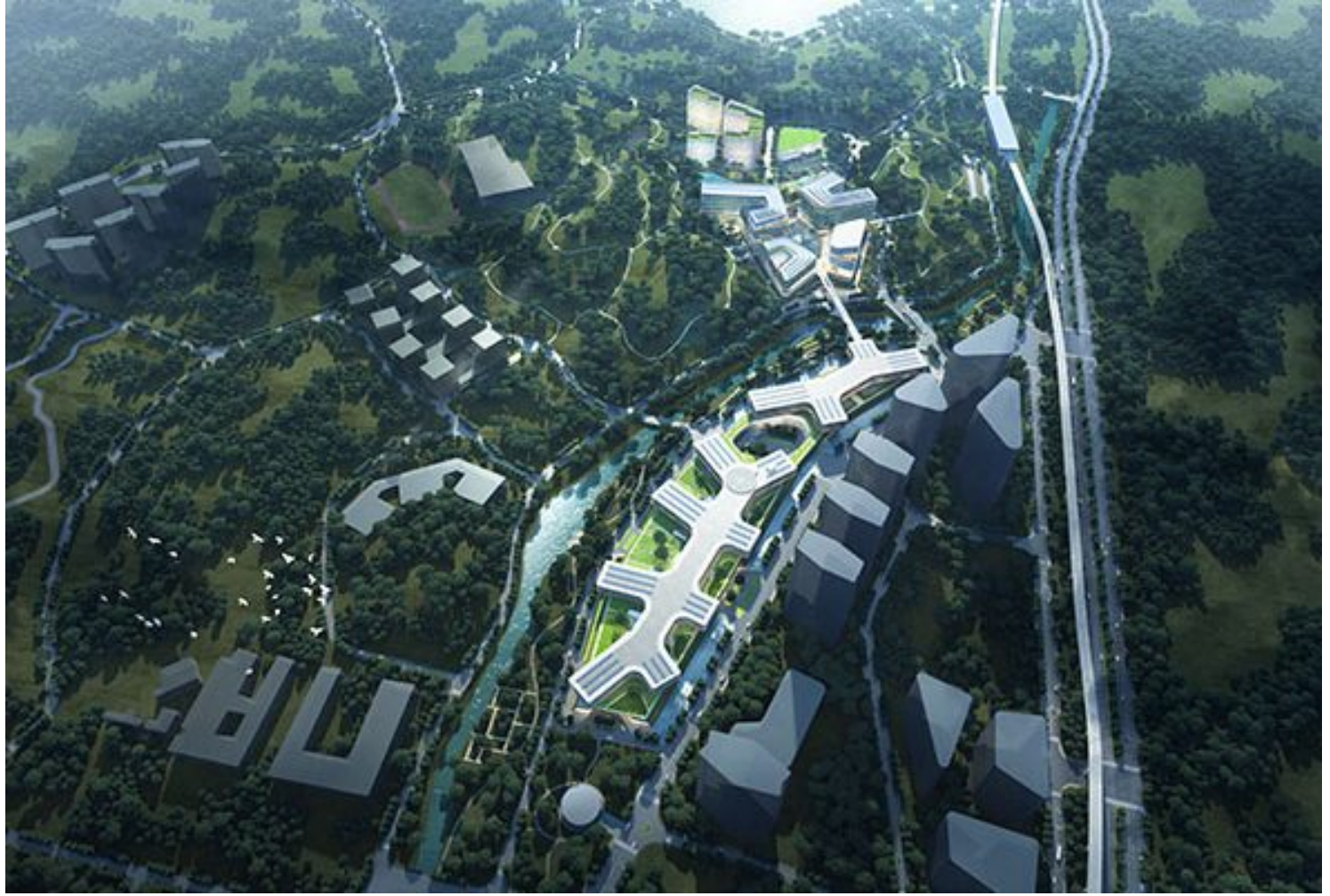




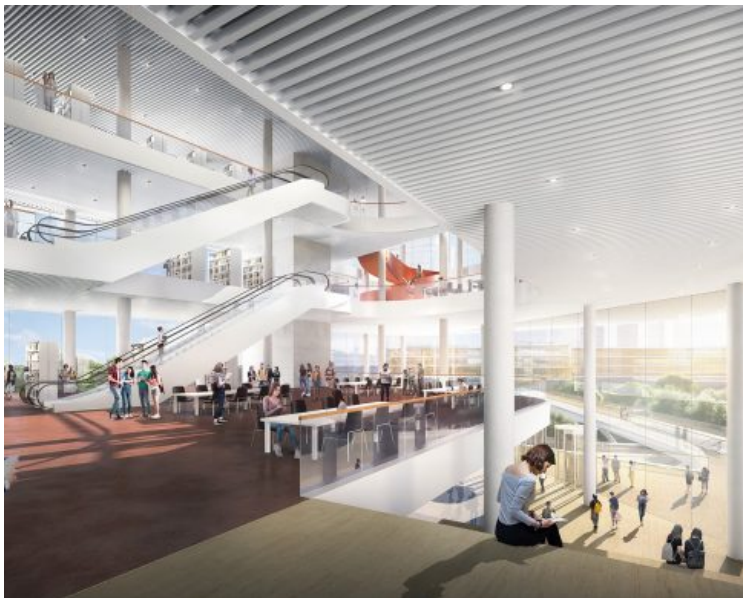
Gerber Architekten

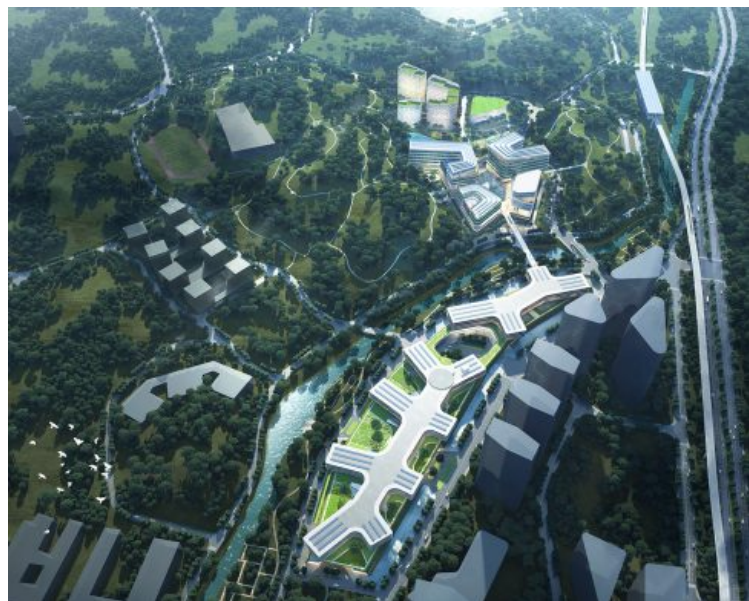


SUS Tech School of Medicine & SUS Tech Affiliated Hospital

In the metropolis of Shenzhen, southwest of Beijing, a comprehensive health complex is being built, consisting of a university area with a library, a clinic with a training centre as well as residential, leisure and sports facilities. The complex, located between a chain of hills and a river, is harmoniously integrated into the surrounding landscape. In the interplay of topography and architecture, landscape elements flow into the concept in the form of a green base storey and façade greening. The U-shape of the individual building areas creates varied outdoor spaces and a loosened-up internal structure. Through this network of relationships between interior and exterior space, the health complex contributes to the well-being of staff and patients.

https://www.gerberarchitekten.de/en/project/sus_tech/







Gerber Architekten

Dortmund
Hamburg
Berlin
Riad
Shanghai

www.gerberarchitekten.de

Bildnachweis · Picture Credits

Für individuelle Foto-/Bild-Nachweise wenden Sie sich bitte an:
For individual photo credits please contact:

Gerber Architekten
Tönnishof 9-13
44149 Dortmund
Germany
Fon: +49 231 9065 - 0
Fax: +49 231 9065 - 111
E-Mail: kontakt@gerberarchitekten.de