



Gerber Architekten

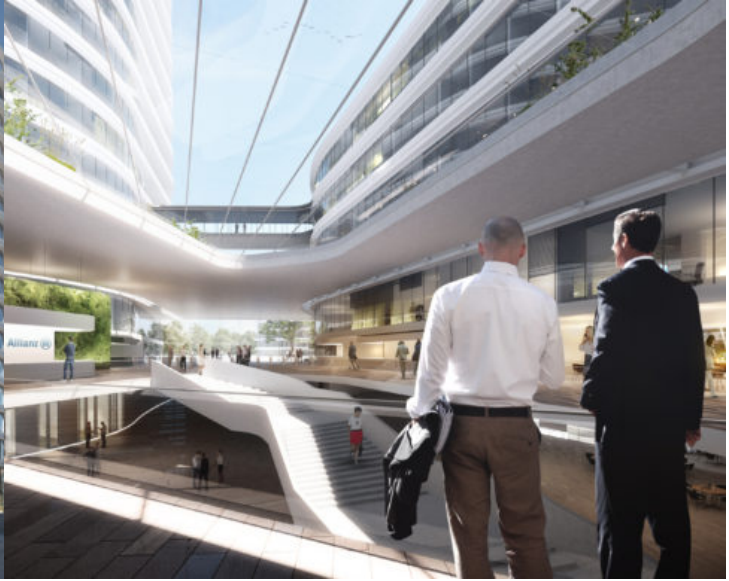


New working environments Allianz Deutschland AG

In Stuttgart-Vaihingen, a new building complex for Allianz AG is being built on a 170,000 m² area. The new headquarter will be completed in 2025 and offers work space for about 4,500 employees. The five buildings of the new Allianz complex are grouped around a new public space along the edge of an existing street. The public space contains an old oak tree as a living monument to mark the new urban context. A central entrance hall at ground level links three of the buildings including the single tower which signals the main entrance and defines the new public space. The two other buildings have separate entrances and can thus function independently. The lower level contains shared functions, including canteens, event and sports areas, and connects all the individual buildings to form a single functional unit and provide optimal communication. The open spaces of the Allianz site provide public access to the nearby Dürrelewangwald recreation area. In this way, the Allianz can be presented as an 'open' company to the general public.

<https://www.gerberarchitekten.de/en/project/new-working-environments-allianz->

deutschland-ag-3/





Gerber Architekten

Dortmund
Hamburg
Berlin
Riad
Shanghai

www.gerberarchitekten.de

Bildnachweis · Picture Credits

Für individuelle Foto-/Bild-Nachweise wenden Sie sich bitte an:
For individual photo credits please contact:

Gerber Architekten
Tönnishof 9-13
44149 Dortmund
Germany
Fon: +49 231 9065 - 0
Fax: +49 231 9065 - 111
E-Mail: kontakt@gerberarchitekten.de